

Honeywell

ADEMCO 6460S/6460W REMOTE KEYPAD

INSTALLATION AND SETUP GUIDE

GENERAL INFORMATION

The ADEMCO 6460S (silver) and 6460W (white) are addressable Remote Keypads designed for use with Honeywell's ADEMCO series control panels. Addresses are set via the keypad keys.

The keys on the keypad are continuously backlit for convenience.

NOTE: If supported, the ADEMCO 6460S and 6460W keypads are supervised by the control panel.

KEYPAD DISPLAYS AND LEDS

The ADEMCO 6460S and 6460W keypads have the following display features:

- 2-line Alpha Display
- Custom Zone Descriptors
- Built-in Speaker Sounder
- Dedicated Function Keys
- Backlit Display (permanent display backlighting is an option on some controls; see the control's instructions for details).

The following table shows the LEDs and their functions:

LED	Function
Red	Lights when the system is armed in any mode
Green	Lights when the system is "ready" to be armed.

SPECIAL FUNCTION KEYS

The keypads also feature function keys. These keys may be programmed for panic alarms or other special functions such as macros. See the control's instructions for details.



Function keys must be held down for at least 2 seconds to activate an alarm; key pairs are activated immediately.

Function Keys
A or [1] and [*]
B or [*] and [#]
C or [3] and [#]
D

WIRING AND INSTALLATION

The keypads can be surface mounted directly to a drywall, or to a single- or double-gang electrical box.

1. Push the two case release snaps at the bottom of the keypad with the blade of a medium screwdriver (this will push in the release snap), then pull that side of the case back away. Refer to Figure 1 for location of the case back release snaps.
2. Route wiring from the control panel through the opening in the case back.
3. Mount the case back to a wall or electrical box.
4. Wire directly from the keypad's terminal block to the terminal block on the control panel. (See Wiring Table below).

NOTE: No more than one wire per terminal may be connected. If daisy-chained configuration is required, pig-tail wires together so that only one wire is terminated under the screw. Use 16-22 AWG wire only!

Wiring Table

Keypad	Control Panel	Wire Color
▲G	Data In	Green
-	- Aux Pwr (GND)	Black
+	+ Aux. Pwr	Red
▼Y	Data Out	Yellow

See the control panel's Installation and Setup Guide for more complete details.

5. Reattach the keypad to its case back.

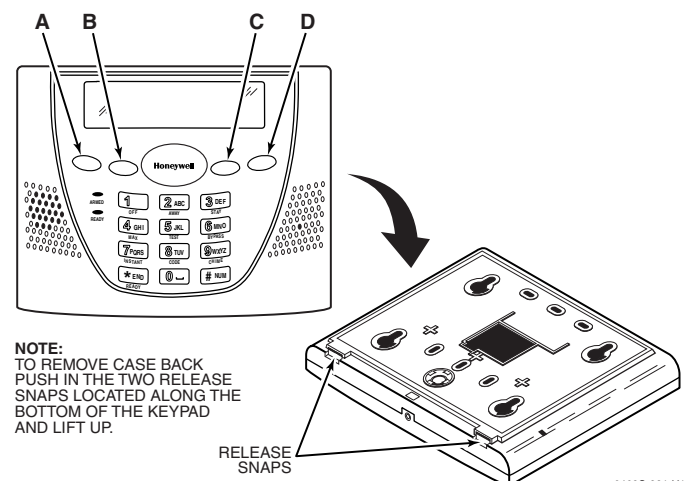


Figure 1. Removing the Case Back

SETTING THE KEYPAD ADDRESS

The keypad can either be set for an address of 00-30, or to the non-addressable mode (31). The keypad's default address is 31.

To change the keypad's address, do the following:

1. Enter address mode: Power up the keypad. Within 60 seconds of power-up, press and hold down the [1] and [3] keys at the same time for 3 seconds. (If unable to enter address mode, power up and try again.)

The current keypad address will be displayed, and the cursor will be under the "tens" digit. If 10 seconds have passed with no key entry, the keypad automatically exits address mode. You must power down, power up and start address mode again.

NOTE: The keypad will not enter address mode if the panel to which it is connected is in programming mode.

2. Set the current address to "00": Press [0] to clear the current "tens" digit. The cursor will move to the "ones" digit position. Press [0] to clear the current "ones" digit. The cursor will move back to the "tens" digit position.
3. Enter the keypad's address: Enter the proper "tens" digit of the keypad's address. The cursor will move to the "ones" digit position. Enter the proper "ones" digit of the keypad's address. Note that address "31" sets the keypad to non-addressable mode.
4. Exit address mode:
Press [*] to save the displayed address and exit address mode.

VIEWING THE KEYPAD ADDRESS

Press and hold down the [1] and [3] keys at the same time for about 3 seconds. The current address is displayed. No key entry is allowed. Press any key to exit or wait 10 seconds to exit viewing mode.

FUNCTION KEY LABELS

A set of adhesive-backed labels with some typical function symbols (i.e., fire, police, personal emergency, etc.) is provided. These labels can be placed on or next to the keys to identify each key's function for the end user (as determined by the control panel's capability and programming; see the control's instructions).

OPERATING THE KEYPAD

For operating instructions, see the User Guide for the control panel used with this keypad.

SPECIFICATIONS

Physical:	5-9/16"H x 6-3/4"W x 1"D
Displays:	2 x 16 alpha-numeric supertwist LCD, backlit.
Sounder:	Speaker.
Voltage:	12VDC (power-limited)
Current:	150mA in alarm (ARMED LED lit, LCD backlight and sounder on), reduces to 40mA when panel is operating in standby mode (backlight off).

NFPA-72 Compliant.

REFER TO INSTALLATION INSTRUCTIONS FOR THE CONTROL PANEL WITH WHICH THIS DEVICE IS USED FOR WARRANTY INFORMATION AND LIMITATIONS OF THE ENTIRE ALARM SYSTEM.

2 Corporate Center Drive, Suite 100
P.O. Box 9040, Melville, NY 11747
Copyright © 2009 Honeywell International Inc.
www.security.honeywell.com

